



## Hard Chess Puzzle # 0133

By

G Bud Games  
<https://gbud.in>

February 10, 2022

# Contents

<b>1</b>	<b>Hard Chess puzzle # 0133 - Mate in 3 moves</b>	<b>3</b>
1.1	Hard chess puzzle 0133 . . . . .	4
1.2	Solution to hard chess puzzle 0133 . . . . .	4
1.2.1	Solution 1 . . . . .	5
1.2.2	Right moves for the solution to the hard chess puzzle 0133 . . . . .	10
1.2.3	Explanation for the moves . . . . .	10
1.3	Categories of hard chess puzzle 0133 . . . . .	11
1.4	hard chess puzzle 0133 chart . . . . .	11
1.5	How to view the solution to hard chess puzzle 0133 . . . . .	13
1.6	How to get help for moves in the hard chess puzzle 0133 . . . . .	14
1.7	Play chess for free . . . . .	15

# List of Figures

1.1	Solve this hard chess puzzle 0133. Mate in 3 moves @ <a href="https://gbud.in/gqf9xp3">https://gbud.in/gqf9xp3</a> . . . . .	4
1.2	Solve this hard chess puzzle online with solution @ <a href="https://gbud.in/gqf9xp3">https://gbud.in/gqf9xp3</a> . . . . .	4
1.3	Initial board position of hard chess puzzle 0133 . . . . .	5
1.4	Bb5+ . . . . .	6
1.5	Rc6 . . . . .	7
1.6	Bxc6+ . . . . .	8
1.7	Kd8 . . . . .	9
1.8	Qxh8# . . . . .	10
1.9	hard chess puzzle 133 chart 1 . . . . .	11
1.10	hard chess puzzle 133 chart 2 . . . . .	12
1.11	hard chess puzzle 133 chart 3 . . . . .	12
1.12	hard chess puzzle 133 chart 4 . . . . .	13
1.13	Click the solution button to view solutions @ <a href="https://gbud.in/gqf9xp3">https://gbud.in/gqf9xp3</a> . . . . .	13
1.14	Click the help button to get help on next move @ <a href="https://gbud.in/gqf9xp3">https://gbud.in/gqf9xp3</a> . . . . .	14
1.15	Solve more hard puzzles @ <a href="https://gbud.in/chshdpz">https://gbud.in/chshdpz</a> . . . . .	14
1.16	Solve other puzzles @ <a href="https://gbud.in/chsgppz">https://gbud.in/chsgppz</a> . . . . .	15
1.17	Play chess online for free. Solve puzzles and play with friends	15
1.18	Solve this puzzle online by scanning this QR code or go to the link below . . . . .	16

# Chapter 1

## Hard Chess puzzle # 0133 - Mate in 3 moves

Solve this hard chess puzzle and improve your chess games through improvement of your chess strategies and chess tactics. This hard puzzle is a subset of [kids games](#).

Puzzle No : 0133

Difficulty level : hard

Description : Mate in 3 moves

Next Move : White

Player level : Advanced

Short URL for puzzle : <https://gbud.in/gqf9xp3>

## 1.1 Hard chess puzzle 0133

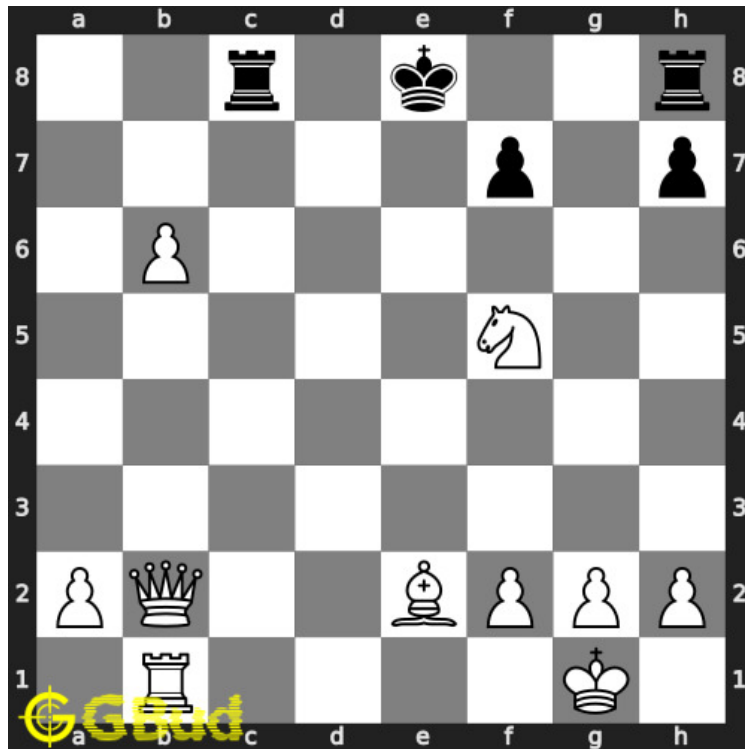


Figure 1.1: Solve this hard chess puzzle 0133. Mate in 3 moves @ <https://gbud.in/gqf9xp3>



Figure 1.2: Solve this hard chess puzzle online with solution @ <https://gbud.in/gqf9xp3>

Dont forget to check out [chess puzzles](#), [easy chess puzzles](#), [medium chess puzzles](#), [hard chess puzzles](#) and [chess puzzles collections](#) .

## 1.2 Solution to hard chess puzzle 0133

At this puzzle, next [move](#) is by [White](#). The objective of the puzzle is to mate in 3 moves.

See the interactive solution at the [puzzle page](#)

## 1.2.1 Solution 1

### 1.2.1.1 Initial board position

This is the initial board position of hard chess puzzle 0133.

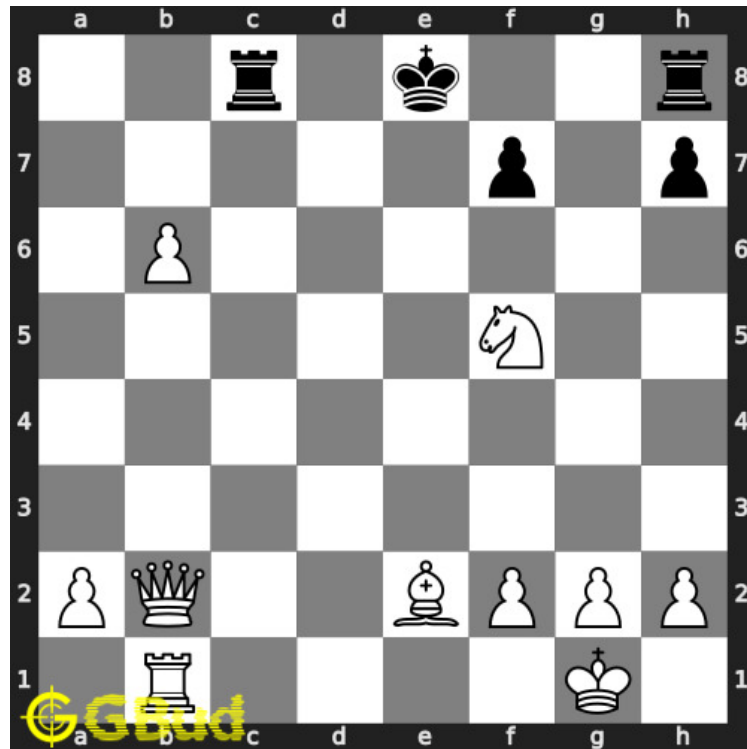


Figure 1.3: Initial board position of hard chess puzzle 0133

### 1.2.1.2 Move 1

Move by white

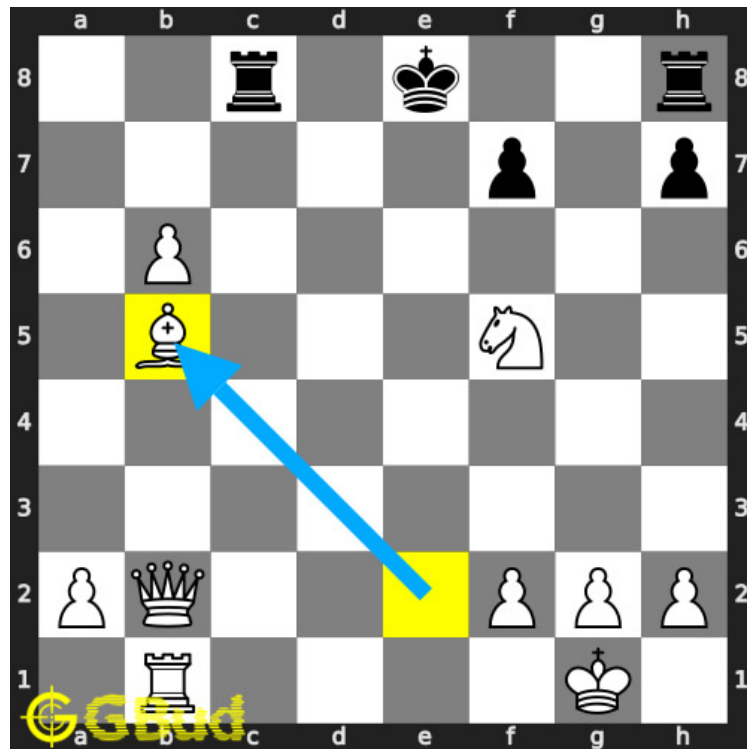


Figure 1.4: Bb5+

your **bishop** moves to **b5** and gives **check**.

### 1.2.1.3 Move 2

Move by black

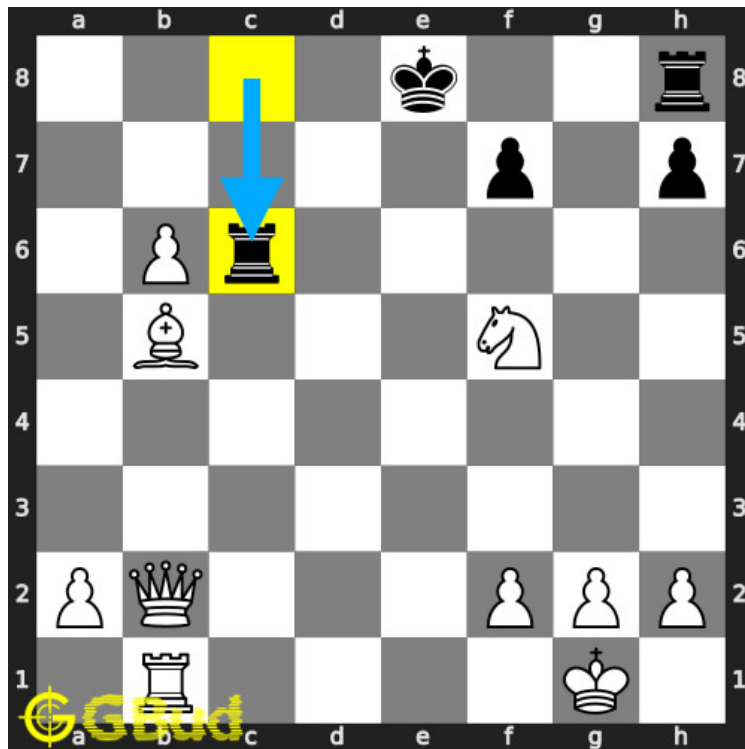


Figure 1.5: Rc6

opponent's rook moves to c6 to block the check threat. opponent's king will not move to d8 or f8 since you can have a checkmate by moving your queen to these squares.

#### 1.2.1.4 Move 3

Move by white



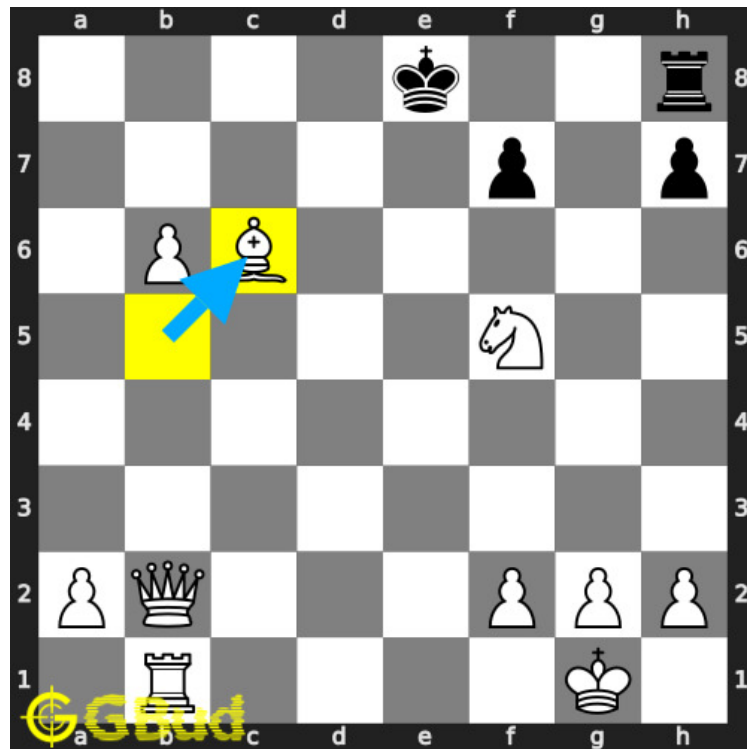


Figure 1.6: Bxc6+

your **bishop captures** opponent's **rook** and gives next **check**.

#### 1.2.1.5 Move 4

Move by black

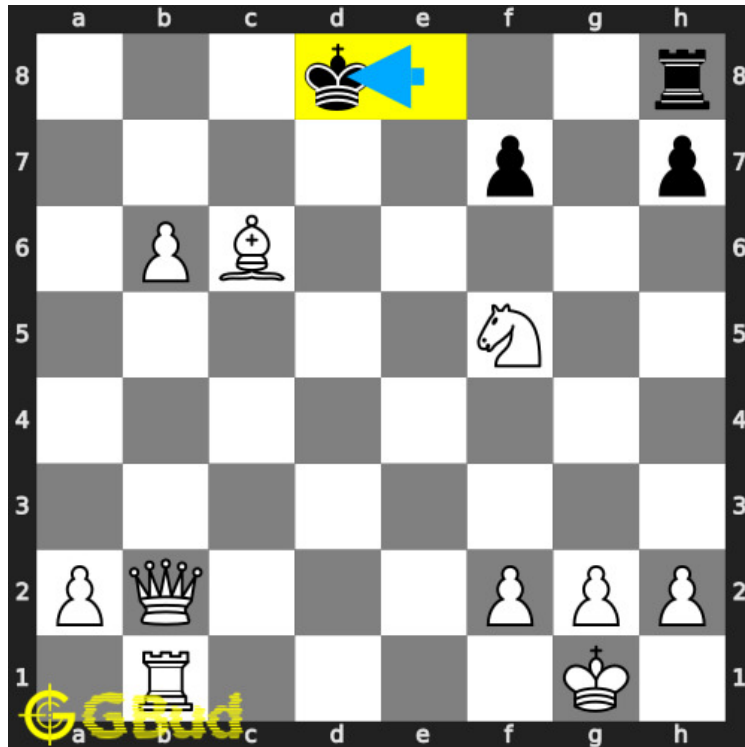


Figure 1.7: Kd8

opponent's king moves to d8 as this is the only legal move available.

### 1.2.1.6 Move 5

Move by white

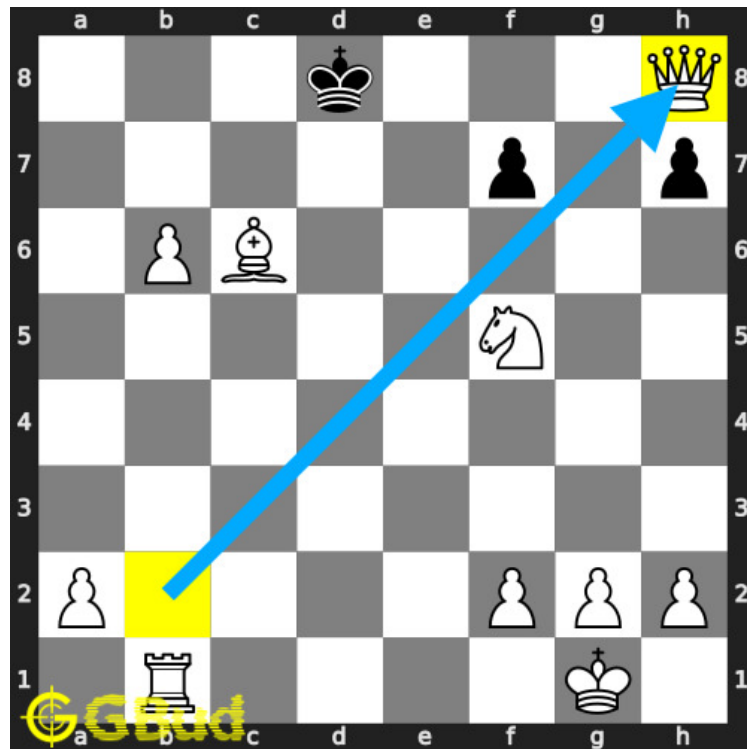


Figure 1.8: Qxh8#

your **queen captures** opponent's **rook** and **checkmate**. opponent's **king** can't **move** due to the attack from your **pieces**. this is how you can **mate** in 3 **moves**.

### 1.2.2 Right moves for the solution to the hard chess puzzle 0133

Based on the objective of the puzzle, you have to make the right moves. Following are the right moves

1. Bb5+, Bxc6+, Qxh8#

### 1.2.3 Explanation for the moves

1. Bb5+ - Your bishop moves to b5 and gives check.
2. Rc6 - Opponent's rook moves to c6 to block the check threat. Opponent's king will not move to d8 or f8 since you can have a checkmate by moving your queen to these squares.
3. Bxc6+ - Your bishop captures opponent's rook and gives next check.
4. Kd8 - Opponent's king moves to d8 as this is the only legal move available.

5. Qxh8# - Your queen captures opponent's rook and checkmate. Opponent's king can't move due to the attack from your pieces. This is how you can mate in 3 moves.
6. For right move - You made sure that checkmate is unstoppable. Quite fantastic moves
7. For wrong move - You should have forced opponents king to move to c8 to have a checkmate. Try once more

## 1.3 Categories of hard chess puzzle 0133

This hard chess puzzle falls in these categories.

1. [Hard chess puzzles](#)
2. [Mate in 3 puzzles in chess](#)
3. [Endgame puzzles in chess](#)
4. [Strategy puzzles in chess](#)
5. [Queen puzzles in chess](#)
6. [Bishop puzzles in chess](#)

## 1.4 hard chess puzzle 0133 chart



Figure 1.9: hard chess puzzle 133 chart 1



Figure 1.10: hard chess puzzle 133 chart 2



Figure 1.11: hard chess puzzle 133 chart 3

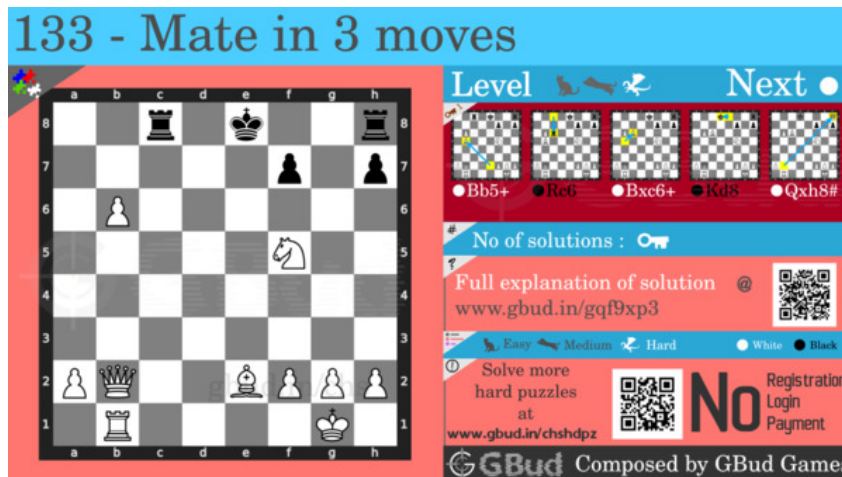


Figure 1.12: hard chess puzzle 133 chart 4

## 1.5 How to view the solution to hard chess puzzle 0133

To view the [solution to this puzzle](https://gbud.in/ggf9xp3), follow the steps given below

1. Go to the [puzzle page](https://gbud.in/ggf9xp3)
2. Click the solution button (Key as shown [below](https://gbud.in/ggf9xp3)) to view the solution



Figure 1.13: Click the solution button to view solutions @ <https://gbud.in/ggf9xp3>

## 1.6 How to get help for moves in the hard chess puzzle 0133

To get help or the possible next moves in the puzzle, , follow the steps given below

1. Go to the [puzzle page](#)
2. Click the help button (exclamation mark as shown [below](#)) to get help or suggestion on next possible [move](#)



Figure 1.14: Click the help button to get help on next move @ <https://gbud.in/gqf9xp3>



Figure 1.15: Solve more hard puzzles @ <https://gbud.in/chshdpz>



Figure 1.16: Solve other puzzles @ <https://gbud.in/chsgppz>

## 1.7 Play chess for free

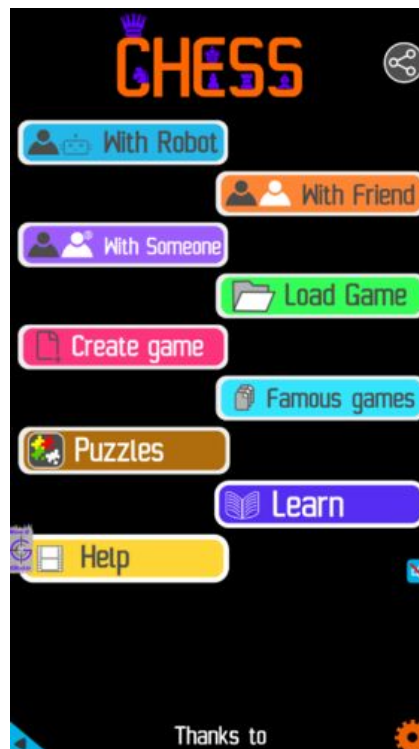


Figure 1.17: Play chess online for free. Solve puzzles and play with friends

Play chess for free at <https://gbud.in/chs>

We present you a platform to play chess online with friends for free. No need to install any app. You can play chess for free without registration or login.

Simple. You can do several chess related activities.

1. [solve chess puzzles](#)
2. [learn about chess](#)



3. [play chess with computer](#)
4. [play chess with friend](#)
5. [create your own chess games](#)
6. [fen viewer](#)
7. [fen editor](#)
8. [fen generator](#)
9. [pgn viewer](#)
10. [chess board editor](#)
11. [view famous chess games.](#)



Figure 1.18: Solve this puzzle online by scanning this QR code or go to the link below

<https://gbud.in/gqf9xp3>

Read the latest article on Hard Chess puzzle # 0133 - Mate in 3 moves by scanning this QR code or click the link

Previous article : [« Hard Chess puzzle # 0132 - Mate in 3 moves](#)

Next article : [Hard chess puzzles »](#)

Access the latest version of this article at  
<https://gbud.in/blog/game/chess/hard-chess-puzzles/hard-chess-puzzle-0133.html>

---

[Back to top](#)

[Contact Us](#)

© GBud Games 2021